



OIL FIRED UNIT HEATERS

The Reznor range of oil fired unit heaters is suitable for a wide variety of commercial and industrial applications. At the heart of these units there is a high efficiency stainless steel primary and secondary heat exchanger. This enables thermal efficiencies of over 90% to be achieved.

A high capacity axial fan ensures optimum air distribution. Both 70 and 100 models are fitted with multiple fans, one or more may be repositioned to provide two way air distribution.

Units are available in four heat outputs 32, 40, 70 and 100kW and they offer the following benefits:

- High thermal efficiencies help to reduce running costs.
- Optimum air distribution at low noise levels.
- Space saving - all units can be either suspended or base mounted thereby freeing up floor space for production or storage requirements.
- Low installation costs - with high thermal efficiencies - over 90% all units are eligible for Enhanced Capital Allowances.
- Two way air distribution (70 and 100kW models only) allow units to be centrally located with air distributed in opposite directions.

Optional Equipment

A range of options are also available. These include: Electro thermolink fire valve sensors, combustion air adaptors, remote control panel c/w lockout reset and summer fan only facility, oil transfer pump or lifter.

Reznor® *THE NAME FOR WARM AIR*

®
R
REZNOR

SPECIFICATION

Heat exchanger

The high efficiency heat exchanger is designed for both long operational life and to have a minimal resistance to airflow through the unit.

Air handling

A quiet powerful axial fan provides high air flow through a series of adjustable horizontal louvers. It is also possible to reverse the direction of the airflow by modifying the position of the adjustable warm air discharge louvre and the axial fan.

Cabinets

Cabinets are constructed from zinc coated steel panels, finished in white epoxy powder coated paint.

Controls

All unit heaters have been designed for fully automatic operation and are available with optional remote control panels.

Installation

The units are suitable for suspended applications or may alternatively be mounted on a flat non combustible surface.

An oil fire valve must be installed external to the building where required in accordance with BS 5410:Part2:1978.

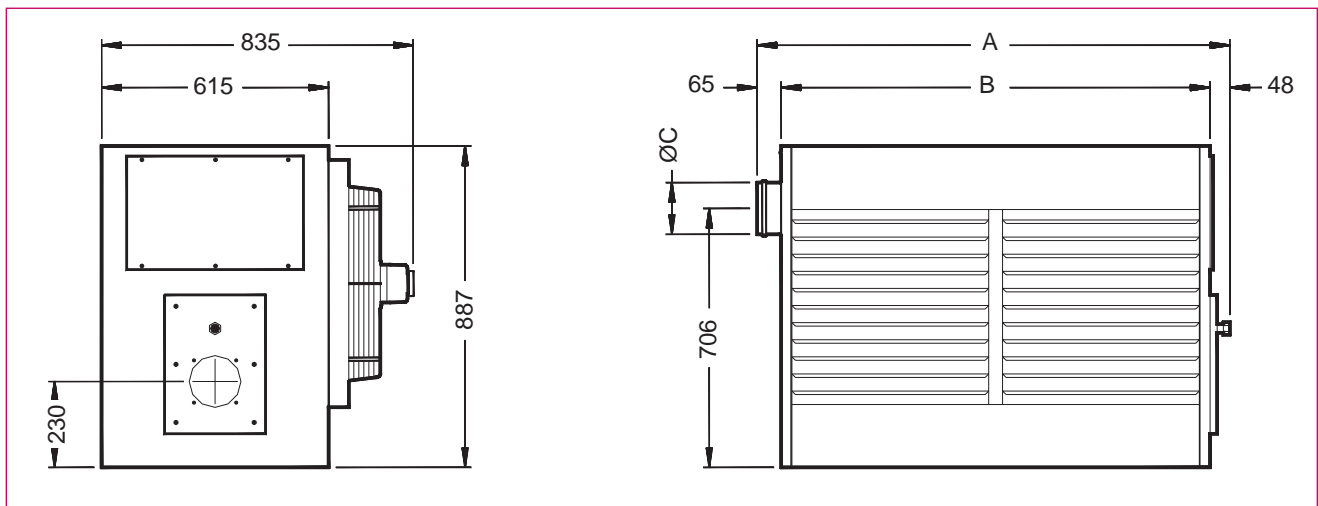
Maximum oil lift is 3.5m (based on a 2 pipe system) which does not include for any oil pipe fittings.

Each heater is supplied with a flue tee piece section suitable for single wall stainless steel flue pipe.

Units must NOT be installed in atmospheres containing highly flammable vapours, combustible dust, halogenated hydrocarbons or chlorinated vapours.

A single phase electrical supply is required for each unit. This supply should not be switched off except for maintenance.

Model		ROFSU 32	ROFSU 40	ROFSU 70	ROFSU 100
Heat output	kW	31.6	39.7	70.2	99.3
Throw	m	12	15	18	22
Air flow (t 15°C)	m³/h	3100	3500	6200	9500
Temperature rise	°C	28	31	31	29
Flue diameter	mm	127	127	152	178
Electrical supply		230 volt 1 phase			
Weight	kg	85	91	137	177



Model	A	B	C
ROFSU 32	723	610	120
ROFSU 40	723	610	120
ROFSU 72	1303	1190	150
ROFSU 100	1883	1770	180

Reznor®



Reznor UK Ltd. Park Farm Road, Folkestone, Kent CT19 5DR

Tel: 01303 259141 Fax: 01303 850002

Email- sales@reznor.co.uk Website- <http://www.reznor.co.uk>



An Anbi-Rad Group company