

AMBIRAD

ENERGY EFFICIENT HEATING SYSTEMS

AR45,50, & 60 kW U Tube Heaters Angle Mounted Installation Only

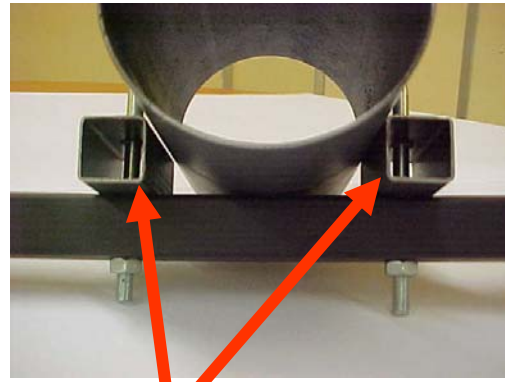
Addendum Sheet

For all other information please use this document in conjunction with AR/ARE installation manual reference GB/AR(E)/079/0904.

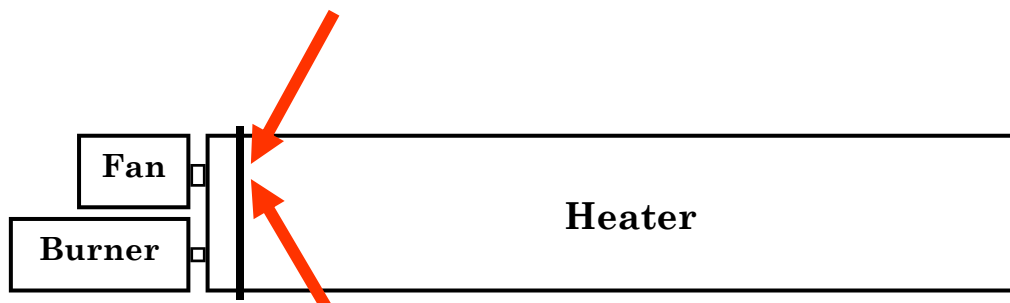
Information

As part of our program of continuous improvement,(QA28 1495) we have found that due to differential expansion of the burner and fan radiant tubes, the reflector end cap may become detached from the reflectors.

To prevent this from happening please ensure that the 2 off tube alignment sections provided with the heater are fitted as follows:-



**201357 Tube Alignment Section
2 Off to be fitted as shown**



**Fit to first bracket on fan side
radiant tube**