



130 YEARS OF INNOVATION

PRICE LIST

V1 | JULY | 2021

**REZNOR®**  
 **NORTEK**  
GLOBAL HVAC



## 1

### Option 1 Sales

[reznorquotes@nortek.com](mailto:reznorquotes@nortek.com)  
[reznorsales@nortek.com](mailto:reznorsales@nortek.com)

- Pricing, Orders and Quotes
- Technical Designs & Support (pre-sales)
- Spares
- Invoice Queries

## 3

### Option 3 Service

[serviceuk.hvac@nortek.com](mailto:serviceuk.hvac@nortek.com)

- Report a Breakdown
- Annual Servicing
- Warranty Call Outs
- Arrange Commissioning

## 2

### Option 2 Post Sales Technical Support

[technicalsupport.hvac@nortek.com](mailto:technicalsupport.hvac@nortek.com)

- Installation Support
- Wiring Advice
- Trouble Shooting

## 4

### Option 4 Accounts & Supply Chain

[hvacuk.creditcontrol@nortek.com](mailto:hvacuk.creditcontrol@nortek.com)

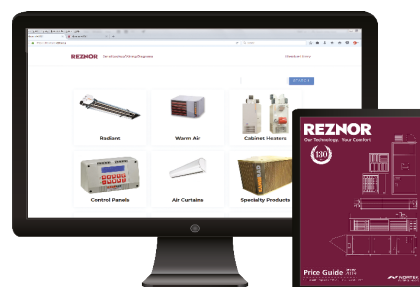
- Credit Limit Advice
- Opening a New Account

## Website & Library

Did you know Reznor has extensive online resources available for you?

Find the latest updates and product news on [www.reznor.eu](http://www.reznor.eu)

You can now access technical literature and information on spare parts for Reznor, AmbiRad, NordairNiche, Benson and AirBloc units at [literature.reznor.eu](http://literature.reznor.eu)



## Spares - View and Order Online

We have an easy to use online spares platform called Empress.

This contains spare parts for all Nortek branded products, past and present, including Reznor, Ambirad, Benson and Airbloc.

Visit [www.EmpressHVAC.com](http://www.EmpressHVAC.com) to order now.



[facebook.com/ReznorHVAC](https://facebook.com/ReznorHVAC)



[@ReznorUK](https://twitter.com/ReznorUK)



[linkedin.com/company/reznor-uk-ltd](https://linkedin.com/company/reznor-uk-ltd)

## Area Sales Managers

Area	Contact	Telephone	Email
Scotland & North East	Tracey Ashley	07778 604226	<a href="mailto:tracey.ashley@nortek.com">tracey.ashley@nortek.com</a>
North	Jason Fryer	07789 717811	<a href="mailto:jason.fryer@nortek.com">jason.fryer@nortek.com</a>
North West	Mark Broadhead	07979 242785	<a href="mailto:mark.broadhead@nortek.com">mark.broadhead@nortek.com</a>
West Midlands	Phil Parsons	07979 242786	<a href="mailto:phil.parsons@nortek.com">phil.parsons@nortek.com</a>
Eastern	Ansar Mahmood	07890 381975	<a href="mailto:ansar.mahmood@nortek.com">ansar.mahmood@nortek.com</a>
South East	Tracey Ashley	07778 604226	<a href="mailto:tracey.ashley@nortek.com">tracey.ashley@nortek.com</a>
South West	Jason Hall	07831 474428	<a href="mailto:jason.hall@nortek.com">jason.hall@nortek.com</a>

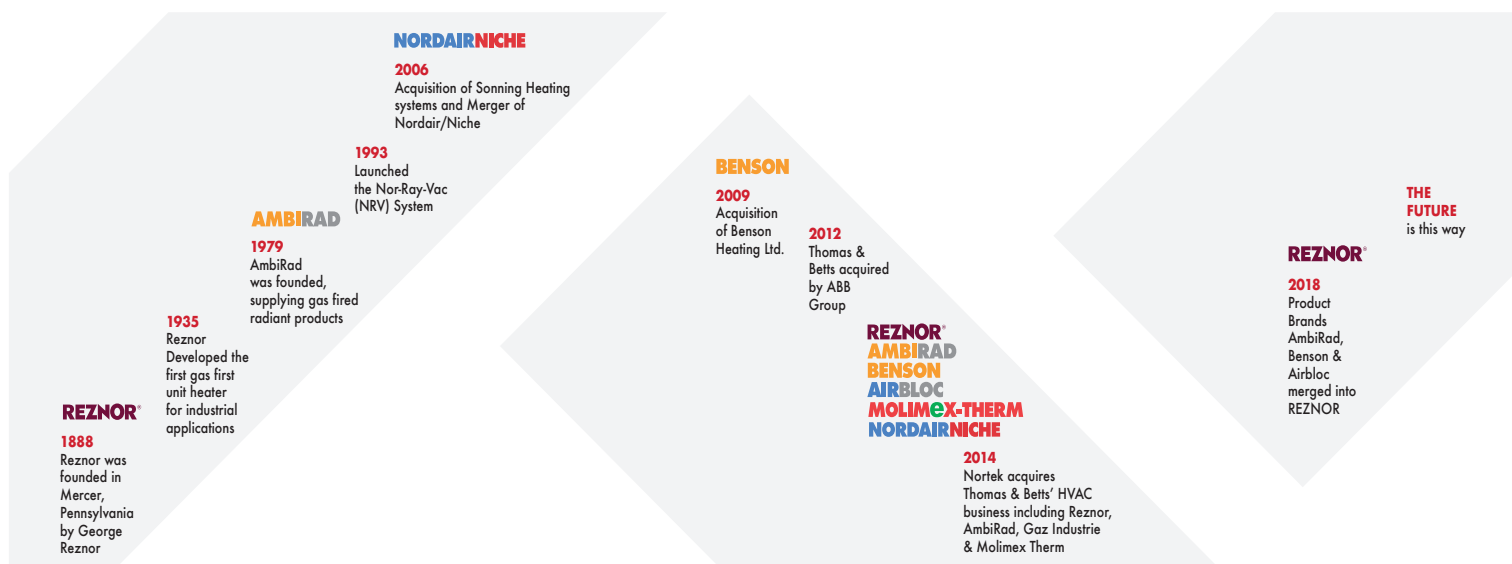
		Page
Radiant Heaters	VSXO - High Efficiency U Tube Models	05
	VSX & VSUTE - U Tube Models	06
	VSLIE - Linear Models	07
	VSDLE & Accessories - Double Linear Models	08
	Accessories - Vision models	09
	Radiant Tube Heaters Accessories	10
	BTwin - High Efficiency Linear	12
	SCR-ECO - Gas Fired Radiant Plaque	13
	Quartzglow - Electric Radiant Heaters	14
	Nor-Ray-Vac - Multi Burner Continuous Radiant Tube System	16
	Sonning <sup>2</sup> OHA - Single Burner Continuous Radiant Tube System	17
Warm Air Heaters	RHeco - Gas Fired Condensing Suspended Unit Heaters	18
	Photon - Gas Fired Unit Heater	19
	Preeva Neos - Heating & Ventilation Unit	20
	Sealed Stainless Steel Flue - For Gas Unit Heaters	22
	DS - Destratification Fans	23
	AirMix - High Induction Duct Distribution System	24
	Smitsair - High Induction Nozzles	25
Evaporative Cooling	ColdAir	26
	ColdAir Optional Equipment	27
Air Curtains	Guardian GS - Surface Mounted Series	28
	Guardian GR - Recessed & Bulkhead Mounted Series	29
	Guardian GB - Recessed & Bulkhead Mounted Series	30
	Accessories - Guardian Series	31
	AC Mini Series - Mini Surface Mounted & Recessed Series	32
	ACT - Electric Ceiling Tile Heaters	33
	AB - Industrial Series	34
	Accessories - AB Industrial Series	35
Miscellaneous	Carriage charges	36
	Terms & Conditions	38
	Warranty	39

# Our history...

For 130 years, Reznor has gone from strength to strength, consistently evolving to better serve its customers and maintain its position as a leading provider of heating, cooling and ventilation solutions.

Since the early days as the favoured producer of gas fired stoves for heating residential homes, Reznor has evolved to be the preferred name in industrial and commercial HVAC solutions.

## NORTEK BRAND LEGACY





## VSXO

High efficiency VSXO Optima models are supplied complete with recuperative heat exchanger and styling kit (end caps shown are optional). Available as U-Tube model only.

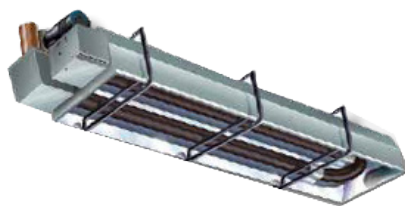
MODEL	DESCRIPTION	HEAT INPUT kW	GAS RATE m3/h	FLUE ADAPTER REFERENCE	LENGTH* m	LIST PRICE
VSXO20UTE	U-TUBE	25	1.9	6	4.1	£1942.00
VSXO25UTE	U-TUBE	32	2.4	6	4.1	£ 2061.00
VSXO30UTE	U-TUBE	36	3.1	6	6.0	£ 2385.00
VSXO35UTE	U-TUBE	40	3.4	6	6.0	£ 2498.00
VSXO40UTE	U-TUBE	44	3.8	6	6.0	£ 2607.00
VSXO45UTE	U-TUBE	50	4.2	6	7.8	£ 2822.00
VSXO50UTE	U-TUBE	50	4.7	6	7.8	£ 2927.00

PROPANE MODELS NOT AVAILABLE

\*WHEN SELECTING OPTIONAL END CAPS, PLEASE ADD 1056MM TO THE LENGTH OF THE UNIT

## End Caps

PART NUMBER	DESCRIPTION	LIST PRICE
VSOCOV2-BLACK	BLACK OPTIONAL END CAPS	£ 312.70
VSOCOV2-BLUE	BLUE OPTIONAL END CAPS	£ 312.70
VSOCOV2-WHITE	WHITE OPTIONAL END CAPS	£312.70



### VSX

High efficiency VSX models are supplied complete with recuperative heat exchanger. Available as U-tube model only.

VISION VSX U-TUBE MODELS WITH FITTED HEAT EXCHANGER (FORCED BURNER) | NATURAL GAS ONLY

MODEL	DESCRIPTION	HEAT INPUT kW	GAS RATE m <sup>3</sup> /h	FLUE ADAPTER REFERENCE	LENGTH* m	LIST PRICE
VSX20UTE2M	U-TUBE	20	1.9	6	4.0	£1643.00
VSX25UTE2M	U-TUBE	25	2.4	6	4.0	£1679.00
VSX30UTE2M	U-TUBE	30	2.9	6	4.0	£1870.00
VSX30UTE3M	U-TUBE	30	2.9	6	6.0	£2004.00
VSX35UTE3M	U-TUBE	36	3.4	6	6.0	£2051.00
VSX40UTE3M	U-TUBE	40	3.8	6	6.0	£2183.00
VSX45UTE3M	U-TUBE	44	4.2	6	6.0	£2220.00
VSX45UTE4M	U-TUBE	44	4.2	6	7.7	£2389.00
VSX50UTE4M	U-TUBE	49.5	4.7	6	7.7	£2464.00

PROPANE MODELS NOT AVAILABLE

\*WHEN SELECTING OPTIONAL END CAPS, PLEASE ADD 1056MM TO THE LENGTH OF THE UNIT

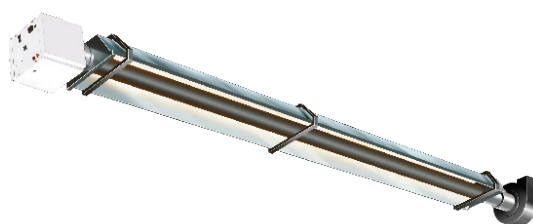


### VSUTE

VS models are supplied complete with turbulators, aluminised steel reflector and endcaps.

VISION VSUTE U-TUBE MODELS (INDUCED BURNER) | PROPANE MODELS AVAILABLE

MODEL	DESCRIPTION	HEAT INPUT kW	GAS RATE m <sup>3</sup> /h	FLUE ADAPTER REFERENCE		LENGTH m	LIST PRICE
				NAT GAS	LPG		
VS15UTE	U-TUBE	15	1.4	1	1	4.5	£1148.00
VS20UTE	U-TUBE	19.5	1.9	1	1	5.1	£1232.00
VS25UTE	U-TUBE	23.5	2.3	1	1	5.1	£1315.00
VS30UTE	U-TUBE	32	3.1	1	1	7.6	£1508.00
VS35UTE	U-TUBE	36	3.4	1	1	7.6	£1592.00
VS40UTE	U-TUBE	40	3.8	4	4	8.5	£1675.00
VS45UTE	U-TUBE	44	4.2	4	4	9.4	£1758.00
VS50UTE	U-TUBE	48	4.6	4	4	9.4	£1842.00



## VSLIE STANDARD

VSLIE models are supplied complete with turbulators, aluminised reflector and end caps.

VISION VSLIE LINEAR MODELS (INDUCED BURNER) - STANDARD LENGTH MODELS

MODEL	DESCRIPTION	HEAT INPUT KW	GAS RATE m <sup>3</sup> /h	FLUE ADAPTER REFERENCE		LENGTH m	LIST PRICE
				NAT GAS	LPG		
VS15LIE8	STANDARD 'SL' TUBE	15	1.4	1	1	8.0	£1138.00
VS20LIE10-5	STANDARD 'SL' TUBE	19.5	1.9	1	1	10.5	£1296.00
VS25LIE8	STANDARD 'SL' TUBE	23.5	2.3	1	1	8.0	£1261.00
VS30LIE10-5	STANDARD 'SL' TUBE	32	3.1	1	4	10.5	£1388.00
VS35LIE10-5	STANDARD 'SL' TUBE	36	3.4	1	4	10.5	£1506.00
VS40LIE13-5	STANDARD 'SL' TUBE	40	3.8	1	4	13.5	£1637.00
VS45LIE13-5	STANDARD 'SL' TUBE	44	4.2	1	4	13.5	£1656.00
VS50LIE13-5	STANDARD 'SL' TUBE	48	4.6	4	4	13.5	£1713.00

PROPANE MODELS AVAILABLE

## VSLIE EXTENDED

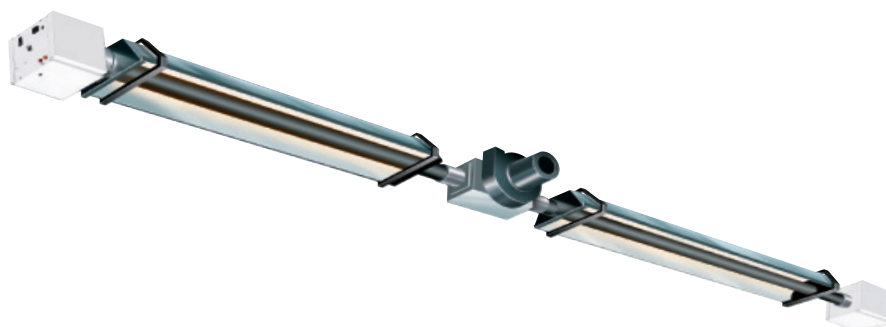
VSLIE models are supplied complete with turbulators, aluminised reflector and end caps.

VISION VSLIE LINEAR MODELS (INDUCED BURNER) - EXTENDED LENGTH MODELS

MODEL	DESCRIPTION	HEAT INPUT KW	GAS RATE m <sup>3</sup> /h	FLUE ADAPTER REFERENCE		LENGTH M	LIST PRICE
				NAT GAS	LPG		
VS25LIE10-5	EXTENDED 'SL' TUBE	23.5	2.3	1	1	8.0	£1378.00
VS30LIE13-5	EXTENDED 'SL' TUBE	29.5	2.8	1	1	10.5	£1514.00
VS35LIE13-5	EXTENDED 'SL' TUBE	36	3.4	1	1	8.0	£1564.00
VS40LIE16	EXTENDED 'SL' TUBE	40	3.8	1	4	10.5	£1719.00
VS45LIE16	EXTENDED 'SL' TUBE	44	4.2	1	4	10.5	£1781.00
VS50LIE16	EXTENDED 'SL' TUBE	50	4.8	1	4	13.5	£1885.00

PROPANE MODELS AVAILABLE

VSLIE MODELS CAN BE USED IN A HERRINGBONE SYSTEM INCORPORATING UP TO 10 HEATERS  
PLEASE CALL 01384 489700 FOR DETAILS



### VSDLE

VS models are supplied complete with turbulators, aluminised steel reflector and endcaps.

Vision VSLIE linear models (induced burner) - Extended length models | PROPANE MODELS AVAILABLE

MODEL	DESCRIPTION	HEAT INPUT kW	GAS RATE m <sup>3</sup> /h	FLUE ADAPTER REFERENCE		LENGTH* m	LIST PRICE
				Nat Gas	LPG		
VS15DLE16	Standard 'DL' Tube	30	2.8	4	4	16	£2382.00
VS20DLE21	Standard 'DL' Tube	39	3.8	4	4	21	£2693.00
VS25DLE16	Standard 'DL' Tube	47	4.6	4	4	16	£2651.00
VS30DLE21	Standard 'DL' Tube	64	6.1	4	4	21	£ 2902.00
VS35DLE21	Standard 'DL' Tube	72	6.8	4	4	21	£3165.00
VS40DLE27	Standard 'DL' Tube	80	7.6	4	5	27	£3401.00
VS45DLE27	Standard 'DL' Tube	88	8.4	5	5	27	£3467.00
VS50DLE27	Standard 'DL' Tube	100	9.6	5	5	27	£3596.00

\*WHEN SELECTING OPTIONAL END CAPS, PLEASE ADD 1056MM TO THE LENGTH OF THE UNIT

### VSDLE

VS models are supplied complete with turbulators, aluminised steel reflector and endcaps.

Vision VSDLE linear models (induced burner) - Extended length models | PROPANE MODELS AVAILABLE

MODEL	DESCRIPTION	HEAT INPUT kW	GAS RATE m <sup>3</sup> /h	FLUE ADAPTER REFERENCE		LENGTH* m	LIST PRICE
				Nat Gas	LPG		
VS25DLE21	Extended 'DL' Tube	47	4.6	4	4	21	£2890.00
VS30DLE27	Extended 'DL' Tube	64	6.1	4	4	27	£3149.00
VS35DLE27	Extended 'DL' Tube	72	6.8	4	4	27	£3279.00
VS40DLE32	Extended 'DL' Tube	80	7.6	4	4	32	£3590.00
VS45DLE32	Extended 'DL' Tube	88	8.4	5	5	32	£3724.00
VS50DLE32	Extended 'DL' Tube	100	9.6	5	5	32	£3937.00



PART NUMBER	DESCRIPTION	LIST PRICE
6506	1/2" Gas Valve	£ 16.70
6500	1/2" Flexible gas connection (600mm long) Plastic coated stainless steel with union to BS6501 part1. 1991 Class "C" construction	£ 45.50
6500-2	1/2"Flexible gas connection (1.0m long for use with VS40LIE and above) Plastic coated stainless steel with union to BS6501 part1. 1991 Class "C" construction	£ 51.40
6515	Suspension chain (galvanised, 10m length)	£ 28.90
6516	Suspension chain (galvanised, 90m length)	£ 243.20
6524-SUB	Speedlinks x 8	£ 16.70
6518	D Shackle (galvanised) each	£1.80
C766300-SUB	Tumbuckle assembly	£8.00
V-LO	Lockout relay	£139.00
6124	Run on timer (0 to 2hrs)	£ 164.70
1350-3	Undershield deflector 2438mm long c/w 2 x 3" munson rings. For models VS15 to 30	£61.40
1350-4	Undershield deflector 2438mm long c/w 2 x 4" munson rings. For models VS35 to 50	£65.70

## Protective Wire Guard

PART NUMBER	DESCRIPTION	MODEL	LIST PRICE
BG15UTE	U-TUBE	VS15UTE	£ 238.40
BG20-25UTE	U-TUBE	VS20UTE & VS25UTE	£358.10
BG30-35UTE	U-TUBE	VS30UTE & 35UTE	£412.40
BG40UTE	U-TUBE	VS40UTE	£412.40
BG45-50UTE	U-TUBE	VS45UTE & 50UTE	£513.30
BG3LE8	U-TUBE	VS15LE 8m	£198.80
BG3LE10-5	U-TUBE	VS20LE & 25LE 10.5m	£252.00
BG4LE10-5	U-TUBE	VS30LE & 35LE 10.5m	£456.80
BG4LE13-5	U-TUBE	VS35LE, 40LE, 45LE & 50LE 13.5m	£561.80
BG4LE16	U-TUBE	VS40LE, 45LE & 50LE 16m	£693.00
M102005-SUB	U-TUBE	Vision Optima 2 module - 15, 20 & 25 models	POA
M102015-SUB	U-TUBE	Vision Optima 3 module - 30, 35 & 40 models	POA
TBA	U-TUBE	Vision Optima 4 module - 45 & 50 models	POA
6569	U-TUBE	Black bulb sensor guard	£38.60

### Wall Mounting Brackets

PART NUMBER	DESCRIPTION	BRACKETS REQUIRED PER HEATER	LIST PRICE
1001836	VS 30, 35 & 40	4	£46.60
1001836	VS 45 & 50	5	£46.60
1001836	VS15 8m model & VS25 8m model	4	£46.60
1001836	VS20, 25, 30 & 35 10.5m models	5	£46.60
1001836	VS30, 35, 40, 45 & 50 13.5m models	6	£46.60
1001836	VS40, 45 & 50 16m models	7	£46.60

### VSXO and VSX Stainless Steel Balanced Flues (100mm diameter)

PART NUMBER	DESCRIPTION	LIST PRICE
33-54-101	1m Length of Pipe	£30.00
33-54-102	0.5m Length of Pipe	£21.10
33-54-103	0.25m Length of Pipe	£17.80
33-54-104	45° Elbow	£18.90
33-55-107	Vertical Concentric Terminal	£277.20
33-51-522	High temperature flexible Flashing	£66.30

### Fresh Air Intake Kit & Adaptors (100mm diameter, single skin aluminium)

PART NUMBER	DESCRIPTION	LIST PRICE
VSI-DA	VS & VSLI Ducted Air Adaptor	£42.00
VSF-DA	VSX Ducted Air Adaptor	£42.00
FAFK-4	Fresh air intake kit (3m x 100mm ID aluminium lengths of pipe (7070-SUB), 1 x rubberised flashing plate & fixing kit (33-51-022) & 1 x 100mm dia terminal (L101590-SUB))	£149.00

### Flue Connectors

PART NUMBER	DESCRIPTION	ADAPTER REF	LIST PRICE
7177-SUB	125mm (5") Fan/flue connector	1	£38.90
7176-SUB	125mm (5") Fan/flue connector	4	£40.90
202365	125mm (5") Fan/flue connector	5	£41.00
201889	125mm (5") VSX Heat exchanger flue connector	6	£55.00

## Twin Wall Flue Components (125mm diameter, 152mm outside diameter)

PART NUMBER	DESCRIPTION	LIST PRICE
7156	914mm Length of pipe	£58.90
7157	1524mm Length of pipe	£90.20
7158	450mm Adjustable length of pipe	£47.60
33-51-222	Rubberised roof plate with fixing kit	£65.70
7162	Gas vent Terminal/cowl	£46.30
7166	Adjustable Elbow 0 to 90°	£45.90

## Twin Wall Flue Kits

PART NUMBER	DESCRIPTION	LIST PRICE
TWFK-5A	Kit 'A' 1 X 1524mm length tube (7157), 1 x 914mm length tube (7156), 1 x 450mm adjustable length flue (7158), rubberised roof plate and fixing kit (33-51-222) and terminal (7162)	£ 308.50
TWFK-5B	Kit 'B' as Kit 'A' plus 2 adjustable elbows (7166)	£400.20

## SmartCom controls

PART NUMBER	MODEL	LIST PRICE
B-SC3ML-SZR	SmartCom single zone controller Std functions include (but not limited to):- single stage heating, self-adapting optimised start, volt free BMS over-ride, timeclock with overtime facility, fan only operation, frost protection, night set-back, burner lockout indication with reset, internal thermostat	£284.50
B-SC3ML-MZR	SmartCom multi zone controller As single zone model, but with the following additional functions: two stage heating & cooling, modulating burner control, networking function	£400.20
29-01-222	SmartCom black bulb sensor	£62.80



## BTwin

BTwin models are supplied complete with turbulators, polished aluminised double curved primary reflector with insulated secondary reflector (for optimum efficiency) and endcaps.

BTwin linear models | PROPANE MODELS AVAILABLE

MODEL	DESCRIPTION	HEAT INPUT kW	GAS RATE m <sup>3</sup> /h	FLUE DIA mm	LENGTH m	LIST PRICE
BTLH2R25	Single linear tube	21	2.2	100	8.8	£2706.00
BTLH2R35	Single linear tube	35	3.7	100	11.1	£3285.00
BTLH2R45	Single linear tube	45	4.7	100	16.1	£4482.00

### BTwin Optional Equipment

PART NUMBER	DESCRIPTION	25 LIST PRICE	35 LIST PRICE	45 LIST PRICE
4003106	Flue adapter	£43.20	£43.11	£43.11
Sundries				
6510	¾" BSP gas valve	£17.90	£17.90	£17.90
6500-1	¾" BSP Flexible gas connection	£51.40	£51.40	£51.40



## SCR-ECO

SCR-ECO units are for use with natural gas as standard and are fitted with a fully automatic burner ignition system requiring a 240v single phase electrical supply. Each unit is supplied with wall mounting brackets and a loose LPG jet.

MODEL	DESCRIPTION	HEAT INPUT KW	LIST PRICE
7/4	7.5kW gas fired plaque heater	21	£823.00
18/10	17.5kW gas fired plaque heater	35	£991.00
29/16	27.0kW gas fired plaque heater	45	£1161.00
44/12+12	41.8kW gas fired plaque heater	40.5	£162.00

## Sundries

PART NUMBER	DESCRIPTION	LIST PRICE
6506	½" BSP Gas tap	£16.70
6500	½" BSP Flexible connector 600mm long	£45.50



## Titan Electric Radiant Heater

MODEL	DESCRIPTION	HEAT INPUT KW	DIMENSIONS mm	MOUNTING HEIGHT mm	LIST PRICE
TI-STAT	Static heater	3.0	669 x 430 x 509	2.0	£622.00
TI-MOB	Mobile heater	3.0	1140 x 650 x 650	2.5 to 4.0	£847.00



## Quartz-glow

The Sorrento range is a robust weatherproof heater available in three configurations. All models are supplied with a wall mounting bracket & for use with single phase electrical supply.

Sorrento Electric Heater | BRACKETS INCLUDED

MODEL	DESCRIPTION	HEAT INPUT KW	DIMENSIONS mm	MOUNTING HEIGHT mm	LIST PRICE
SORDL 15	Single linear tube	1.5	402 x 227 x 112	2.0	£332.00
SORDL 30	Double linear tube	3.0	790 x 227 x 112	2.5 to 4.0	£566.00
SORTL 45	Triple linear tube	4.5	1178 x 227 x 112	2.5 to 4.0	£813.00



## Quartz-glow

The Sorrento range is a robust weatherproof heater available in three configurations. All models are supplied with a wall mounting bracket & for use with single phase electrical supply.

Sorrento Electric Heater | BRACKETS INCLUDED

MODEL	DESCRIPTION	HEAT INPUT kW	DIMENSIONS mm	MOUNTING HEIGHT mm	LIST PRICE
QH 15-1	Single tube	1.5	402 x 227 x 112	2.1 to 4.0	£341.00
QH 30-1	Double tube	3.0	790 x 227 x 112	3.0 to 4.5	£598.00
QH 45-1	Triple tube	4.5	1178 x 227 x 112	3.5 to 5.5	£771.00
QH 45-3	Triple tube - 3ph	4.5	422 x 525 x 110	3.5 to 5.5	£826.00
QHL 30-1	Double linear tube	3.0	857 x 255 x 110	3.0 to 4.5	£630.00
QHL 45-1	Triple linear tube	4.5	1282 x 255 x 110	3.5 to 5.5	£872.00
QHL 45-3	Triple linear tube - 3ph	4.5	1282 x 255 x 110	3.5 to 5.5	£910.00
QHL 90-3	Triple double linear tube - 3ph	9.0	857 x 630 x 110	5.0 to 7.0	£1525.00

Nor-Ray-Vac is a continuous radiant tube heating system designed to provide uniform heat coverage over the entire floor area. Alternatively, the system can also cater for distinct zones providing a varied degree of comfort level within the overall layout of the building.

Nortek strives to become part of the 'design team', working closely with engineers or end users to determine the specific design parameters for the Nor-Ray-Vac scheme layout. This contact between the company's engineers and the system designer or client will give the most effective Nor-Ray-Vac system.

The result is a heating system designed specifically for the needs of the building and the way that the premises are managed.

### Model Range

The Nor-Ray-Vac Series continuous radiant tube heating system includes six natural gas (or propane) modulating burner models from 12 to 46kW, radiant tube lengths from 5.2 to 27 metres. Maximum tube temperatures range from 450°C to 480°C.

### System Operation

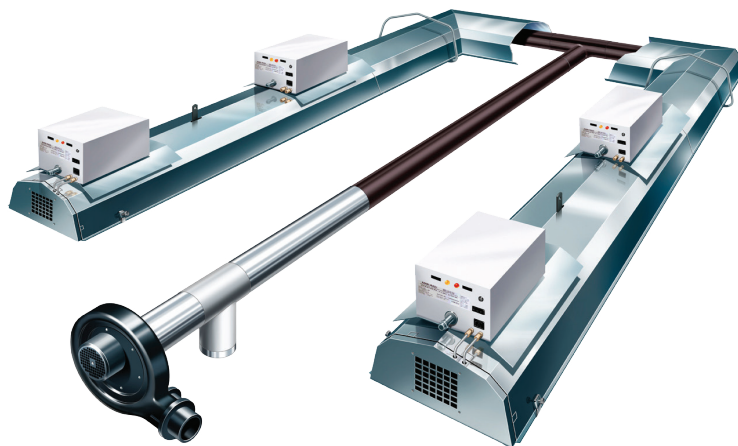
The system operates on a vacuum principle and utilises a zero governor within a dedicated gas valve ensuring optimum efficiency, reliability and safety.

The zero governor will only allow flow of gas when a vacuum is created by the fan. Therefore as well as the standard failsafe (where the gas valve locks out with ignition or gas supply failure), the zero governor also mechanically prevents gas flow in the event of vacuum shut down. The control of gas flow through the zero governor and the air flow into the mixing chamber while under the influence of the vacuum fan, enables stoichiometric combustion at the burner head.

Stoichiometric combustion permits the inclusion of further burners within the same tubing 'downstream' from the first burner, ensuring evenly distributed heat along the length of radiant tube.

Conforming to the European Gas Appliance regulations (EN 777), the end vent module burner has been developed to 'prove' flow of air at the start of each radiant branch. The end vent module burner is a unique feature to the Nor-Ray-Vac system and instils the principle of 'safety of operation' as a prerequisite of design.

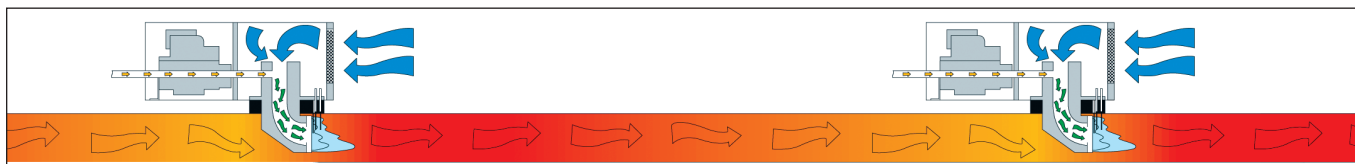
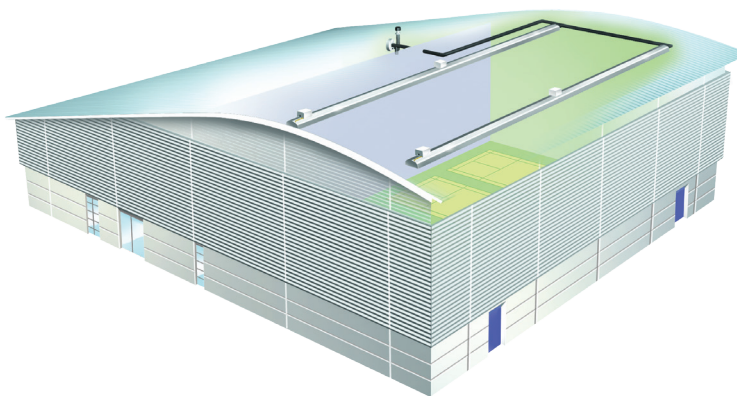
## Nor-Ray-Vac



### NOR-RAY-VAC

Please contact sales on 01384 489700 for more information on Nor-Ray-Vac continuous radiant tube system

£POA





## CONTINUOUS RADIANT SYSTEM

**REZNOR®**

Sonning<sup>2</sup> OHA is a continuous gas fired radiant tube heating system fitted with either a single internal or external burner, which employs 80% flue gas re-circulation and is designed specially for the building it is required to heat.

The inclusion of modulating burner on the OHA RHE ranges enables thermal efficiencies of up to 96% to be achieved.

The OHA system is designed to provide uniform heat coverage over the entire floor area. The system can also cater for distinct zones providing a varied degree of comfort level within the overall layout of the building.

Nortek strives to become part of the 'design team', working closely with engineers or end users to determine the specific design parameters for the OHA scheme layout. This contact between the company's engineers and the system designer or client will give the most effective OHA system.

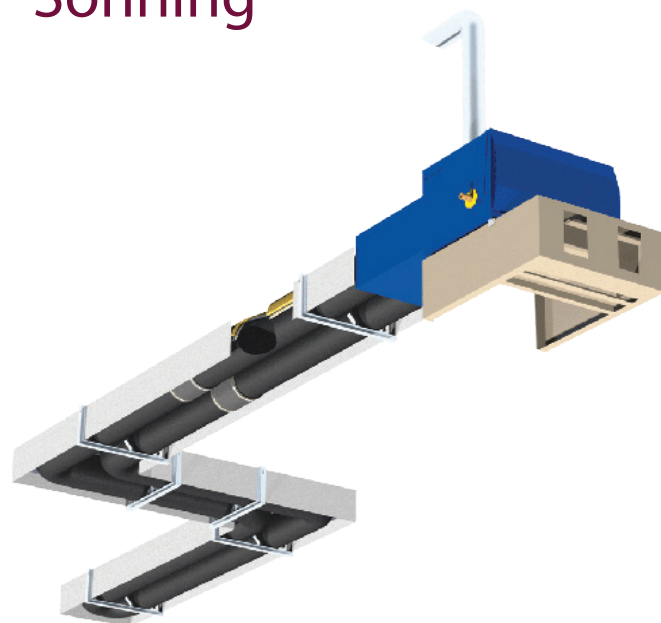
### Model Range

The OHA Series radiant tube heating system includes nine natural gas or propane burner models from 50 to 400kW, radiant tube lengths from 25 to 400 metres. Maximum tube temperatures range from 200°C to 350°C.

The OHA RHE Modulating Series radiant tube heating system includes 6 natural gas or propane burner models from 100 to 370kW, radiant tube lengths from 35 to 250 metres. Maximum tube temperatures range from 120°C to 290°C.

The heaters will operate equally as effective on a wide variety of fuels; natural gas, LPG and oil (OHA only)

Sonning<sup>2</sup>



SONNING

Please contact sales on 01384 489700 for more information on Sonning<sup>2</sup> continuous radiant tube system

£POA





ErP Lot 21  
Seasonal Efficiency  
and NOx compliant

## RHeco

Gas fired ultra high efficiency, low NO<sub>x</sub> condensing, suspended warm air unit heater.  
Supplied with axial fan, modulating burner, automatic ignition, horizontal & vertical louvres.

PROPANE MODELS AVAILABLE

MODEL	HEAT INPUT kW	AIRFLOW	FLUE DIA Ø mm	LIST PRICE
ULSA 025	25	2,900	80	£3692.00
ULSA 035	33	3,700	80	£3909.00
ULSA 050	50	5,600	80	£4055.00
ULSA 075	70	7,900	100	£5179.00
ULSA 100	94	10,500	100	£5179.00

## RHeco Optional Equipment

PART NUMBER	DESCRIPTION	025 LIST PRICE	035 LIST PRICE	050 LIST PRICE	075 LIST PRICE	100 LIST PRICE
TBA	Air outlet discharge 30° downturn nozzle	£115.50	£115.50	£115.50	£136.50	£136.50
TBA	Supply air fan Modulating fan (100% to 50%)	£375.90	£371.70	£312.90	£572.30	£576.50
TBA	Thermostat Air re-circulating thermostat	£131.30	£131.30	£131.30	£131.30	£131.30
B-sc3ml-mzr 29-01-219	Controls					
	SmartCom multi zone control panel	£400.10	£400.10	£400.10	£400.10	£400.10
	Remote room sensor (for use with SmartCom)	£62.80	£62.80	£62.80	£62.80	£62.80
	Sundries					
6506	½" BSP gas valve	£16.70	£16.70		-	-
6510	¾" BSP gas valve	-	-	£17.90	£17.90	£17.90
6500	½" BSP flexible connection	£45.50	£45.50	-	-	-
6500-1	¾" BSP flexible connection	-	-	£51.40	£51.40	£51.40
	Wall brackets	£199.50	£199.50	£199.50	£199.50	£199.50
6529	Drop rods M10 x 3 metre	£11.10	£11.10	£11.10	£11.10	£11.10



ErP Lot 21  
Seasonal Efficiency  
and NOx compliant

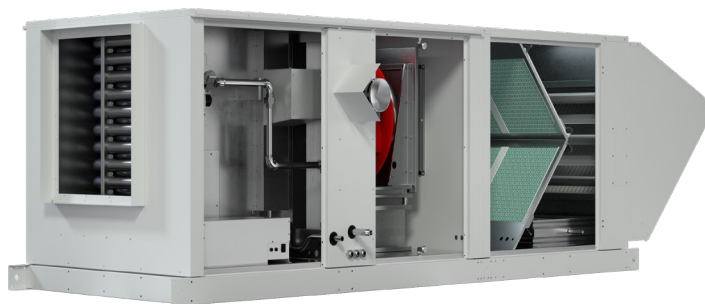


## PHOTON

Gas fired unit heater with a high airflow axial fan for free blowing applications, a modulating burner and units are available for natural gas (G20,G25, G25.3) as standard.

MODEL	HEAT OUTPUT kW	AIRFLOW k/H	FLUE DIA Ø mm	LIST PRICE
10	9.34	1223	80	£2000.00
20	18.39	2533	80	£2200.00
25	26.54	3035	100	£2300.00
35	31.68	4120	100	£2400.00
45	42.24	4562	100	£2500.00
55	53.46	5877	100	£2800.00
65	63.59	7125	130	£3000.00
70	71.25	8681	130	£3350.00
100	97.87	10350	130	£3850.00
120	120.16	17552	130	£5200.00

PART NUMBER	DESCRIPTION	LIST PRICE 10/20/25	LIST PRICE 35/45/55/65/70/100	LIST PRICE 120
TBA	Air outlet discharge 30° downturn nozzle	£TBA	£TBA	£TBA
<b>Controls</b>				
B-sc3ml-mzr	SmartCom multi zone control panel	£400.10	£400.10	£400.10
29-01-219	Remote room sensor (for use with SmartCom)	£62.80	£62.80	£62.80
<b>Sundries</b>				
6506	½" BSP gas valve	£16.70	-	-
6510	¾" BSP gas valve	-	£17.90	-
1023509	1" BSP gas valve	-	-	£22.80
6500	½" BSP flexible connection	£45.50	-	-
6500-1	¾" BSP flexible connection	-	£51.40	-
1023510	1" BSP flexible connection	-	-	£80.50
TBA	Wall brackets	£TBA	£TBA	£TBA
6529	Drop rods M10 x 3 metre	£11.10	£11.10	£11.10



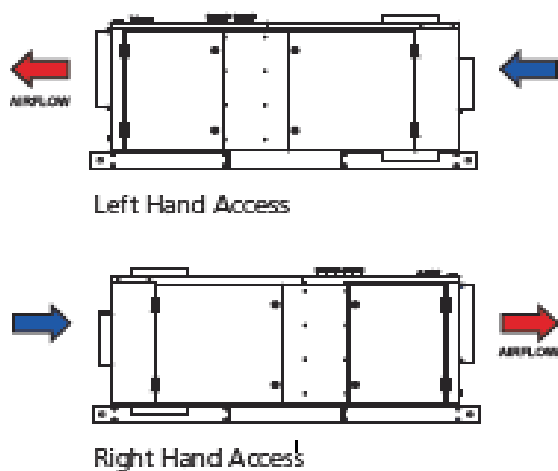
## PREEVA NEOS

Gas fired air heater units providing combined heating and ventilation with optional cooling. 4-pass heat exchanger technology, single burner with multi-try ignition and direct expansion (DX) and chilled water (CHW) cooling coils.

MODEL	DESCRIPTION	HEAT OUTPUT kW	COOLING OUTPUT kW (otpional)	MIN AIRFLOW	MAX AIRFLOW	LIST PRICE
PRN025-I	25kW PREEVA NEOS	26.61	19	2000	3500	£POA
PRN035-I	35kW PREEVA NEOS	34.41	28	2530	5080	£POA
PRN045-I	45kW PREEVA NEOS	42.52	30	3060	6100	£POA
PRN055-I	55kW PREEVA NEOS	53.56	30	3980	7000	£POA
PRN070-I	70kW PREEVA NEOS	70.66	51	5300	10500	£POA
PRN100-I	100kW PREEVA NEOS	99.12	63	8060	14000	£POA
PRN025-I-----1PH	25kW PREEVA NEOS, single phase	26.61	19	2000	3500	£POA
PRN035-I-----1PH	35kW PREEVA NEOS, single phase	34.41	28	2530	5080	£POA

### External Model

MODEL	DESCRIPTION	HEAT OUTPUT kW	COOLING OUTPUT kW (otpional)	MIN AIRFLOW m3/h	MAX AIRFLOW m3/h	LIST PRICE
PRN025-I	25kW PREEVA NEOS	26.61	19	2000	3500	£POA
PRN035-I	35kW PREEVA NEOS	34.41	28	2530	5080	£POA
PRN045-I	45kW PREEVA NEOS	42.52	30	3060	6100	£POA
PRN055-I	55kW PREEVA NEOS	53.56	30	3980	7000	£POA
PRN070-I	70kW PREEVA NEOS	70.66	51	5300	10500	£POA
PRN100-I	100kW PREEVA NEOS	99.12	63	8060	14000	£POA
PRN025-I-----1PH	25kW PREEVA NEOS, single phase	26.61	19	2000	3500	£POA
PRN035-I-----1PH	35kW PREEVA NEOS, single phase	34.41	28	2530	5080	£POA



## PREEVA NEOS

Each configuration is unique, please contact the team for further advice.  
[reznorsales@nortek.com](mailto:reznorsales@nortek.com) or 01384 489700.

£POA

## Optional Equipment

OPTION TYPE	OPTIONS
Air Discharge selection	Supply air Duct Spigot
	Standard Louvre frame with horizontal louvres
	Vertical louvres
	30° Discharge Nozzle with Horizontal louvres
	60° Discharge Nozzle with Horizontal louvres
Filter/Mixing Cabinets	Downturn cabinet with PE Insulation
	Mixing Cabinet with a selection of duct spigot connections, located at the Top, Rear or Bottom. 1-2 can be selected.
	Additional damper options
	Vertical louvres
	G4 50mm Panel filters
Cooling Options	EU5 & EU7 Bag filters
	DX Cooling coils
	Chilled Water Cooling coils
Miscellaneous Controls	Dirty filter control

**Option 1 - Fan Assisted Stainless Steel Flue Only**

DESCRIPTION		80 mm	100 mm	130 mm
Horizontal flue terminal	Part No. List Price	33-54-006 £109.80	33-54-106 £127.50	33-54-206 £136.40
Vertical flue terminal	18.39 Part No. List Price	33-54-006 £109.80	33-54-107 £54.40	33-54-207 £55.50
<b>To connect with terminal &amp; heater</b>				
Pipe 1m length	Part No. List Price	33-54-001 £26.70	33-54-101 £30.00	33-54-201 £42.20
Pipe 0.5m length	Part No. List Price	33-54-002 £20.00	33-54-002 £20.00	33-54-202 £28.90
Pipe 0.25m length	53.46 Part No. List Price	33-54-003 £15.60	33-54-103 £17.80	33-54-203 £26.70
90° Elbow	Part No. List Price	33-54-005 £24.40	33-54-105 £24.40	33-54-205 £34.40
45° Elbow	71.25 Part No. List Price	33-54-004 £17.80	33-54-104 £18.90	33-54-204 £30.00

**Option 2 - Room Sealed Stainless Steel Flue Components**

DESCRIPTION		80 mm	100 mm	130 mm
Horizontal concentric flue terminal assembly	Part No. List Price	33-55-009 £147.50	33-55-106 £184.10	33-55-206 £266.10
Vertical concentric flue terminal assembly	Part No. List Price	33-55-010 £191.80	33-55-107 £277.20	33-55-207 £413.50
<b>To connect between terminal and heater</b>				
Pipe 1m length	Part No. List Price	33-54-001 2 x £26.70	33-54-101 2 x £30.00	33-54-201 2 x £42.20
Pipe 0.5m length	Part No. List Price	33-54-002 2 x £20.00	33-54-102 2 x £21.10	33-54-202 2 x £28.90
Pipe 0.25m length	Part No. List Price	33-54-003 2 x £15.60	33-54-103 2 x £17.80	33-54-203 2 x £26.70
90° Elbow	Part No. List Price	33-54-005 2 x £24.40	33-54-105 2 x £24.40	33-54-205 2 x £34.40
45° Elbow	Part No. List Price	33-54-004 2 x £17.80	33-54-104 2 x £18.90	33-54-204 2 x £30.00
Horizontal flue terminal guard (basket)	Part No. List Price	39-15-001 2 x £21.10	39-15-001 2 x £21.10	39-15-001 2 x £21.10
Flexible flashing for flat roof or corrugated sheets (single pipe)	Part No. List Price	33-51-222 £65.70	33-51-522 £66.30	33-51-622 £110.60





### DS Destratification Fans

PART NUMBER	MODEL	PRIMARY AIRFLOW k/H	MOUNTING HEIGHT	LIST PRICE
Ds3 -4	DS 3	3,000	4 to 8m	£428
Ds4-4	DS 4	5,300	6 to 12m	£606
Ds6-4	DS 6	6,600	6 to 12m	£620
DS10-4	DS 3	9,000	10 to 18m	£765

### DS Optional Equipment

PART NUMBER	DESCRIPTION	LIST PRICE	DS FAN LIST PRICE
28-00-301	Stainless Steel wire roof fixing kit		£88.70



### IM Low Velocity Impeller Destratification Fans

PART NO	MAX PRIMARY AIR FLOW M3/h	MOUNTING HEIGHT m	TYPICAL FLOOR COVERAGE m	LIST PRICE
B-IM1400-C	Up to 12.000	2.5 to 12 m	130	£118
<b>Controllers IM fans must be used with one of the IMC controllers below</b>				
B-IMC5	1 to 5 fans			£67.64
B-IMC12	1 to fans			£455.39

The Air Mix high induction air distribution system is an innovative concept that is quick and easy to install, reliable, and inexpensive in operation. It provides an evenly diffused distribution of warm air and is ideal for open warehouse or retail areas without false ceilings.

The system utilises a lightweight duct that has a large number of small outlet nozzles, either evenly spaced along the length of the duct or located in specific areas.

Air is introduced into the duct and forced out of the nozzles at high speed, creating a negative pressure zone - thereby inducing surrounding air and recirculating "free heat" from lighting and heat that has risen to the roof space which would normally be wasted.

The result is a very evenly distributed heat at low air velocities and low noise levels, eliminating excess heat stratification and the need for air re-circulation fans.

### Model Range

The Air Mix diffusers are made with airtight fireproof fabric, which thanks to a special treatment will remain unaltered over time. They are available in a range of diameters & colours, all are supplied complete with assembly kit.

The kit includes:

- > Tailor made duct
- > Fixing bands
- > Suspension system

### Specification

Air Mix is centred on an innovative duct system manufactured from a fire resistant coated fabric, specially treated against dust, and acid vapours for guaranteed stability.

The system allows the use of smaller duct diameters, reducing the weight on the building structure and reduces installation time.



### AIRMIX

Please contact technical design on  
01384 489700 for more information on  
AirMix induction air distribution systems

£POA

Each system is custom designed and manufactured in accordance with individual specifications, with the number, layout and diameter of ducts determined for maximum efficiency. Ducts are available in a wide range of colours to suit the decor of the location and require no further decorative finish on site. Final adjustments are carried out after installation and the system needs minimal maintenance.





Reznor Smitsair® offer an alternative air induction system that gives optimal air distribution in large open space premises, such as market halls and warehouses.

The aerodynamic construction of the nozzles makes it possible to achieve airflow velocities of 10 to 30m/s at a proportionally low nozzle pressure. The nozzles may be applied in groups on plenums or spaced out along a conventional duct system, allowing for flexible or irregular heating patterns in any large premises.

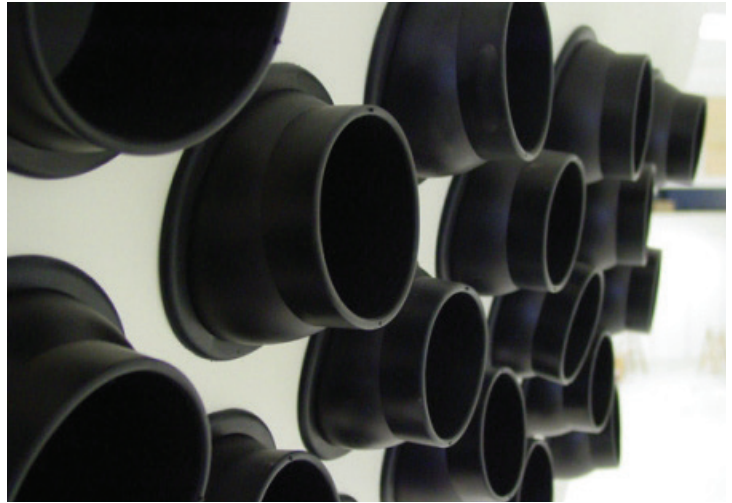
Primary air at high velocity entrains and recirculates large volumes of secondary air to produce a comfortable working environment.

The nozzles are easy to fit or remove by hand and the direction of the airflow can be adjusted after assembly from 0° to 60°. Air throw - from 15 to 50 metres - is calculated before assembly and may be adjusted during installation.

The Smitsair® system can be used to heat, cool or ventilate large spaces with negligible differences in vertical and horizontal air temperatures.

### Features & Benefits

- Low static pressure
- Uniform distribution of air
- Adjustable nozzles
- Long throws available
- Low noise
- Available in black or white



#### SMITSAIR

Please contact technical design on  
01384 489700 for more information on  
Smitsair high induction systems

£POA

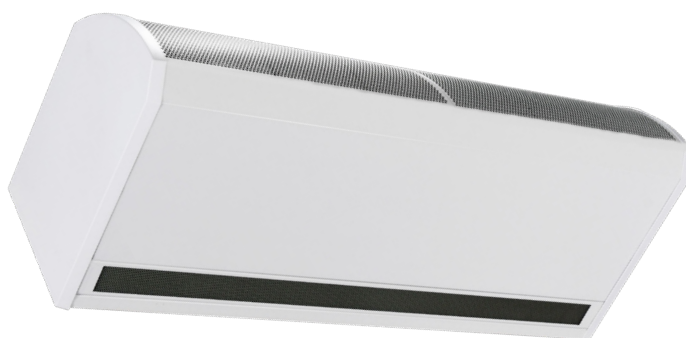


## COLDAIR

MODEL	INSTALLATION	AIRFLOW k/M	FEQUIVALENT REFRIGERATING CAPACITY kW	INCLUDES	LIST PRICE
WA100	Wall/window	10,000	15	Wall bracket	£3039.00
WA150	Wall/window	13,000	19		£3189.00
RA150	Roof Top	13,000	19	Base stand	£3471.00
RA200	Roof Top	20,000	30		£4625.00
RC100	Roof Top (centrifugal)	10,000	15	Base stand	£4917.00
RC200	Roof Top (centrifugal)	19,000	30		£5869.00

## ColdAIR Optional Equipment

PART NUMBER	DESCRIPTION	WA100 LIST PRICE	WA150 LIST PRICE	WA100 LIST PRICE	RA 150 LIST PRICE	RC 100 LIST PRICE	RC 200 LIST PRICE
101-942	Horizontal and vertical air diffuser with adjustable flaps 600 x 600	£288.23	-	£288.23	-	£288.23	-
101-943	Horizontal and vertical air diffuser with adjustable flaps 1150 x 115	-	-	-	-	£463.38	£463.38
103-153	Roof air diffuser 4 way with horizontal adjustable flaps	£781.53	£781.53	£781.53	-	£781.53	-
103-158	Roof air diffuser 6 way with horizontal adjustable flaps	-	-	-	£1430.00	-	£1430.00
431-001	Winter hood	£125.28	£125.28	-	-	-	-
431-002	Winter hood	-	-	£154.10	-	£154.10	-
431-006	Winter hood	-	-	-	£191.79	-	£191.79
600-008	Network router	£434.56	£434.56	£434.56	£434.56	£434.56	£434.56
	Air extract fan	£1579.68	£139.23	£1692.75		-	-
500-020	Air flow detector	£351.42	£351.42	£351.42	£351.42	-	-
600-004	EVO display - automatic functions electronic controller	£274.93	£274.93	£274.93	£274.93	£274.93	£274.93
600-018	ECO display - manual functions electronic controller	£123.10	£123.10	£123.10	£123.10	£123.10	£123.10
600-033	Network board c/w temp & humidity probe, for one or more units	£609.71	£609.71	£609.71	£609.71	£609.71	£609.71
600-034	Network board, no probe, for one or more unit	£489.99	£489.99	£489.99	£489.99	£489.99	£489.99
600-050	Digital main board - to be placed in main switch board	£2872.24	£2872.24	£2872.24	£2872.24	£2872.24	£2872.24
600-053	Computer connection gateway & management software to complete	£2721.48	£2721.48	£2721.48	£2721.48	£2721.48	£2721.48
600-052	Digital main board with computer connection gateway & management software	£5591.48	£5591.48	£5591.48	£5591.48	£5591.48	£5591.48
600-051	MODBUS module to connect to an existing BUS system	£3124.98	£3124.98	£3124.98	£3124.98	£3124.98	£3124.98
400-019	2m Corrugated Tube for Water Discharge Displacement	£52.16	£52.16	£52.16	£52.16	£52.16	£52.16



### GUARDIAN GS

Guardian GS series are commercial/retail air curtains designed for suspension via drop rods, or wall mounting via optional wall brackets, to serve doors/entrances. Standard colour is white (RAL9003), other RAL colours are available at additional cost.

Available in three versions:- ambient (unheated), electric (heated) or LPHW (heated).

#### Ambient (no heating) Models - Single Phase

MODEL	DOOR WIDTH	MAX DOOR # HEIGHT	MAX AIRFLOW k/H	LIST PRICE
GS1000A	1000	4000	1800	£1238.00
GS1500A	1500	4000	2700	£1760.00
GS2000A	2000	4000	3600	£2140.00

#### Electric (heated) Models - Three Phase

MODEL	HEAT OUTPUT kW	DOOR WIDTH	MAX DOOR # HEIGHT	MAX AIRFLOW k/H	LIST PRICE
GS1000E	9/12	1000	4000	1800	£1293.00
GS1500E	12/18	1500	4000	2700	£1762.00
GS2000E	18/24	2000	4000	3600	£2197.00

#### LPHW (heated) Models - Single Phase

MODEL	HEAT OUTPUT kW	DOOR WIDTH	MAX DOOR # HEIGHT	MAX AIRFLOW k/H	LIST PRICE
GS1000W	12	1000	4000	1800	£1354.00
GS1500W	18	1500	4000	2700	£1824.00
GS2000W	24	2000	4000	3600	£2258.00

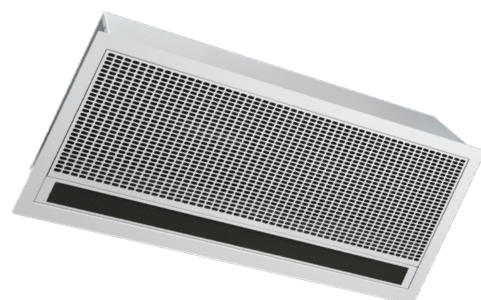
#### Guardian Optional Equipment

PART NUMBER	DESCRIPTION	LIST PRICE
GS-FXT	Emergency exit kit (customer fit)	£130.20
GS-WMB	Wall mounting (suspension) brackets (pair)	£37.80
	Finish to specific RAL Colour	P.O.A

## GUARDIAN GR

Guardian GR series are (recessed cased) commercial/retail air curtains designed for discreet positioning in a suspended ceiling or bulkhead above doorways. Standard colour for the grille surround is white (RAL9003).

Available in three versions:- ambient (unheated), electric (heated) or LPHW (heated).



### Ambient (unheated) Models - Single Phase

MODEL	DOOR WIDTH	MAX DOOR # HEIGHT	MAX AIRFLOW k/H	LIST PRICE
GR1000A	1000	4000	1800	£1495.00
GR1500A	1500	4000	2700	£2186.00
GR2000A	2000	4000	3600	£2530.00

### Electric (heated) Models - Three Phase

MODEL	HEAT OUTPUT kW	DOOR WIDTH	MAX DOOR # HEIGHT	MAX AIRFLOW k/H	LIST PRICE
GS1000E	9/12	1000	4000	1800	£1632.00
GS1500E	12/18	1500	4000	2700	£2358.00
GS2000E	18/24	2000	4000	3600	£2784.00

### LPHW (heated) Models - Single Phase

MODEL	HEAT OUTPUT kW	DOOR WIDTH	MAX DOOR # HEIGHT	MAX AIRFLOW k/H	LIST PRICE
GR1000W	12	1000	4000	1800	£1554.00
GR1500W	18	1500	4000	2700	£2235.00
GR2000W	24	2000	4000	3600	£2651.00

### GUARDIAN GB

Guardian GB (bulkhead) series are commercial/retail air curtains designed for discreet positioning in a suspended ceiling or bulhead above doorways where low visual impact is required.

Available in three versions:- ambient (unheated), electric (heated) or LPHW (heated).

#### Ambient (unheated) Models - Single Phase

MODEL	DOOR WIDTH	MAX DOOR # HEIGHT	MAX AIRFLOW k/H	LIST PRICE
GB1000A	1000	4000	1800	£1238.00
GB1500A	1500	4000	2700	£1706.00
GB2000A	2000	4000	3600	£2410.00

#### Electric (heated) Models - Three Phase

MODEL	HEAT OUTPUT kW	DOOR WIDTH	MAX DOOR # HEIGHT	MAX AIRFLOW k/H	LIST PRICE
GB1000E	9/12	1000	4000	1800	£1293.00
GB1500E	12/18	1500	4000	2700	£1762.00
GS2000E	18/24	2000	4000	3600	£2197.00

#### LPHW (heated) Models - Single Phase

MODEL	HEAT OUTPUT kW	DOOR WIDTH	MAX DOOR # HEIGHT	MAX AIRFLOW k/H	LIST PRICE
GB1000W	12	1000	4000	1800	£1354.00
GB1500W	18	1500	4000	2700	£1824.00
GB2000W	24	2000	4000	3600	£2258.00

## Options

PART NUMBER	DESCRIPTION	LIST PRICE
RJ45-CABLE-2	Plug and play cable 2m	£18.80
RJ45-CABLE-10	Plug and play cable 10m	£25.80
RJ45-CABLE-20	Plug and play cable 20m	£39.10
RJ45-CABLE-30	Plug and play cable 30m	£50.70
RJ45-CABLE-50	Plug and play cable 50m	£72.30
RJ45-CABLE-100	Plug and play cable 100m	£197.20
RJ12-CABLE-3	Plug and play cable 3m (ACV-ACVRD only)	£20.30
RJ12-CABLE-5	Plug and play cable 5m (ACV-ACVRD only)	£22.90
RJ12-CABLE-10	Plug and play cable 10m (ACV-ACVRD only)	£25.10
RJ12-CABLE-15	Plug and play cable 15m (ACV-ACVRD only)	£34.60
RJ12-CABLE-40	Plug and play cable 40m (ACV-ACVRD only)	£64.20
RJ12-CABLE-CONNECT	Connector for 2 x RJ12 cables	£17.10
RJ45-CABLE-CONNECT	Connector for 2 x RJ45 cables	£17.50
SC-OS	Outside sensor	£60.60
AC-DC	Door contact set	£46.60
AC-TC	Honeywell timeclock	£119.90



Time Clock



Door Magnet Set



Outside Sensor



RJ12 Cable

## AC & ACR MINI

AC & ACR Mini series are commercial/retail air curtains designed for use over doors, mounted on walls or ceiling (AC). The ACR model allows positioning in a suspended ceiling or bulhead above doorways where low visual impact is required. All models include electric heating as standard.



Recessed Model



Wireless Controller



Surface Mounted Model

### Surface Mounted (Electric 1ph) - Wireless Controller Ready

MODEL	HEAT INPUT	DOOR WIDTH mm	DOOR HEIGHT mm	AIRFLOW k/H	LIST PRICE
MINI600SE3-WC	33	600	1800	273	£549.00
MINI800SE4-5-WC	4.5	800	2700	382	£700.00
MINI1000SE6-WC	6	1000	3600	382	£772.00
1Z-RX Wireless controller (up to 16 units)					£145.00

### Recessed (Electric 1ph) - Wireless Controller Ready

MODEL	HEAT INPUT	DOOR WIDTH mm	DOOR HEIGHT mm	AIRFLOW k/H	LIST PRICE
ACRMINI3-WC	600	600	1800	180	£718.00
ACRMINI4-5-WC	800	800	2700	216	£789.00
ACRMINI6-WC	1000	900	3600	432	£991.00
1Z-RX Wireless controller (up to 16 units)					£145.00



ACT  
SERIES

ACT series is an electric heater that directs a downflow of warm air from overhead. Available as either a recessed or surface mounted models.



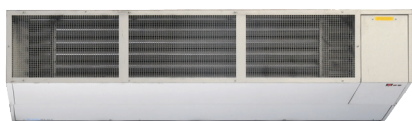
## Recessed (Electric 1ph) - Wireless Controller Ready

MODEL	HEAT INPUT	DIMENSIONS mm	MOUNTING HEIGHTS mm	LIST PRICE
ACT03R-WC	33	220H x 600W x 600D	3000	£554.00
ACT04R-WC	4.5	220H x 600W x 600D	3500	£706.00
ACT06R-WC	6	220H x 600W x 600D	3500	£790.00
1Z-RX Wireless controller (up to 16 units)				£145.00

## Surface Mounted (Electric 1ph) - Wireless Controller Ready

MODEL	HEAT INPUT	DIMENSIONS mm	MOUNTING HEIGHTS mm	LIST PRICE
ACT03S-WC	33	220H x 600W x 600D	3000	£718.00
ACT04S-WC	4.5	220H x 600W x 600D	3500	£789.00
ACT06S-WC	6	220H x 600W x 600D	3500	£991.00
1Z-RX Wireless controller (up to 16 units)				£145.00

# REZNOR® INDUSTRIAL AIR CURTAINS



Single Module



Double Module

## AB

AB industrial air curtains are for horizontal use above doors up to 6.0m high and available from 1.75m wide up to 6.75m. They are available in ambient (unheated), gas heated, electric heated and LPHW heated versions, with steam heated versions available on request. Control panels are available as an option.

ABX industrial air curtains are for horizontal use above doors up to 9.0m high and available from 2.25m wide up to 6.75m. They are available in ambient (unheated) and LPHW heated versions, with steam heated versions available on request. Control panels are available as an option.

Control panels are available as an option.

### Ambient (no heating)

MODEL	NO OF MODULES	MAX DOOR HEIGHT	LENGTH m	QTY OF BRACKETS FOR VERTICAL MODELS	LIST PRICE
AB175A-2	1	6.0	1.75	2	£2600.00
AB225A-2	1	6.0	2.25	2	£3199.00
AB350A-2	2	6.0	3.50	3	£5622.00
AB400A-2	2	6.0	4.00	3	£6295.00
AB450A-2	2	6.0	4.50	3	£6833.00
AB525A-2	3	6.0	5.25	3	£7381.00
AB575A-2	3	6.0	5.75	4	£7782.00
AB625A-2	3	6.0	6.25	4	£8169.00
AB675A-2	3	6.0	6.75	4	£8557.00

### Gas Heated

MODEL	NO OF MODULES	HEAT INPUT kW	MAX DOOR HEIGHT m	LENGTH m	TEMP RISE °C	LIST PRICE
AB175E-2	1	18	6.0	1.75	6.0	£3541.00
AB225E-2	1	24	6.0	2.25	6.0	£4112.00
AB350E-2	2	36	6.0	3.50	6.0	£5662.00
AB400E-2	2	42	6.0	4.00	6.0	£6326.00
AB450E-2	2	48	6.0	4.50	6.0	£7041.00
AB525E-2	3	54	6.0	5.25	6.0	£8248.00
AB575E-2	3	60	6.0	5.75	6.0	£8397.00
AB625E-2	3	66	6.0	6.25	6.0	£9070.00
AB675E-2	3	72	6.0	6.75	6.0	£9208.00

## LPHW Heated

MODEL	NO OF MODULES	HEAT INPUT kW	MAX DOOR HEIGHT m	LENGTH m	TEMP RISE °C	LIST PRICE
AB175W-2	1	60	6.0	1.75	16	£4389.00
AB225W-2	1E	70	6.0	2.25	16	£5129.00
AB350W-2	2	120	6.0	3.50	16	£8398.00
AB400W-2	2	130	6.0	4.00	16	£9146.00
AB450W-2	2	140	6.0	4.50	16	£9762.00
AB525W-2	3	180	6.0	5.25	16	£11070.00
AB575W-2	3	190	6.0	5.75	16	£11549.00
AB625W-2-2	3	200	6.0	6.25	16	£12017.00
AB675W-2-2	3	210	6.0	6.75	16	£12486.00

## AB Accessories

PART NUMBER	DESCRIPTION	LIST PRICE
CP-AB-AMBI	Ambient models controller	£659.40
CP-ABGAS-SINGLE-2	Gas models controller (1 module)	£1138.50
CP-ABGAS-TWIN-2	Gas models controller (2 module)	£1238.30
CP-ABGAS-TRIPLE-2	Gas models controller (3 module)	£1378.00
CP-ABELEC-SINGLE-18	Electric models controller AB150-175	£2051.00
CP-ABELEC-SINGLE-24	Electric models controller AB225	£2183.00
CP-ABELEC-TWIN-36	Electric models controller AB300-350	£2220.00
CP-ABELEC-TWIN-42	Electric models controller AB400	£2389.00
CP-ABELEC-TWIN-48	Electric models controller AB450	£2464.00
CP-ABELEC-TRIPLE-54	Electric models controller AB525	£1679.00
CP-ABLPHW-SINGLE	LPHW models controller (1 module)	£1870.00
CP-ABLPHW-TWIN	LPHW models controller (2 module)	£2004.00
CP-ABLPHW-TRIPLE	LPHW models controller (3 module)	£2051.00
N1611	Door Switch - All Controllers	£2183.00
N7041	Room Thermostat - All Controllers	£2220.00
6500-1	¾" Flexible gas connection for AB gas models	£2389.00
6510	¾" BSP Gas valve for AB Gas models	£2464.00



### Radiant & Evaporative Cooling Equipment

MODELS	
Vision, Nor-Ray-Vac, Sonning <sup>2</sup> , SCR-ECO, Electric Quartz and Evaporative cooling	All models carriage charge 6% of net invoice (minimum charge £55.00, maximum charge £1200.00 per delivery)

### Warm Air Unit Equipment

MODELS	SIZE	QUANTITY		
		1	2-4	5
RHeco	25 - 50	£126.00 each	£117.00 each	£110.00 each
	75 - 100	£63.00 each	£151.00 each	£140.00 each
UDSA	11 - 73	£93.00 each	£88.00 each	£82.00 each
	85 - 145	£131.00 each	£122.00 each	£113.00 each

## Destratification Fans

MODELS	DELIVERY OPTIONS	QUANTITY		
		1	2-4	5+
All Models	3-4 days	£37.00 each	£28.00 each	£24.00 each
	Next day	£66.00 each	£55.00 each	£51.00 each

## Commercial Air Curtains

MODELS	DELIVERY OPTIONS	QUANTITY		
		1	2-4	5+
Guardian	Next day	£63.00 each	£54.00 each	£52.00 each
AC / ACR Mini, ACT	Next day	£39.00 each	£36.00 each	£33.00 each
All Models	Next day before 9:00 am	£89.00 each	£80.00 each	£75.00 each

## Industrial Air Curtains

MODELS	NO OF MODULES	QUANTITY		
		1	2-4	5+
AB	1	£82.00 each	£68.00 each	£61.00 each
	2	£126.00 each	£108.00 each	£97.00 each
	3	£168.00 each	£141.00 each	£134.00 each

## Flue

DESCRIPTION	
Flue only	All flue carriage charge 6% of net invoice (minimum charge £35.00)
Flue shipped with heater orders	Free of charge

Off-loading is the responsibility of the customer, if you require special off-loading facilities please call the UK sales office on 01384 489 700

## Carriage Charge Information

- UK mainland only, other destinations P.O.A
- Hiab and other special requirements P.O.A
- All prices ex-works Brierley Hill
- All equipment sold subject to Conditions of Sale
- Transport charges are not subject to trade discount
- Carriage charges maybe subject to a fuel surcharge
- All prices based upon 3 working day delivery unless specified; next working day delivery add £35.00 per unit
- Next day deliveries based on ex-stock units being delivered next working day on orders received before 12.00 noon

No order shall be binding until acknowledged by Nortek Global HVAC in writing .  
The products covered by this price list are all deemed to be of standard colour, duty and specification.  
All prices are ex-works. Carriage will be charged at the rate ruling at date of despatch.  
Minimum order charge £25.00 plus p&p on small items.  
VAT will be additionally charged at the ruling rate on date of invoice.

#### Payment Terms

30 days from date of invoice for approved accounts. Payment prior to despatch and early payment discounts quoted upon request.

#### Returns Policy

We hope you will be completely satisfied with any product or component purchased from Nortek Global HVAC UK Ltd, but if you wish to return an item, we aim to make it as quick and convenient as possible.

#### Returns Process

Please call 01384 489 250 and select from one of the options for the relevant product return.

Please have your return details ready and our trained staff will guide you through the process. On acceptance a returns material authorisation number will be given which must be included both on the packaging and returns paperwork. Upon the issuing of an RMA number, goods must be returned to us within 10 working days. We are unable to process any goods returned without an RMA number.

Not all requests to return goods will be accepted.

#### Damaged in Transit

If you take delivery of a product that has been damaged in transit, the goods must be checked and any damage reported in writing within 3 working days. Claims made outside this period will not be considered. The product then requires return/collection within 10 working days.

#### Return of Faulty Goods

Should a fault develop with a product purchased from us within the first year of ownership, please contact our Service department with details of the fault and we will advise you how to proceed. Nortek Global HVAC UK Ltd reserves the right to either replace or repair faulty item(s). Should we deliver a replacement item we will invoice for it, crediting the faulty item upon receipt.

#### Ordered Incorrectly/Incorrectly Supplied/Not Required

If an item has either been ordered incorrectly, incorrectly supplied or is not required, it can be returned within 30 days from purchase as long as it remains unused, in new condition and with all packaging and labels intact. Should Nortek Global HVAC UK Ltd incur any costs in re-working or re-packaging the returned items to a re-saleable condition, this will affect the amount of credit due.

Returned items that have been ordered incorrectly or are not required will incur a 25% restocking charge. If these items are collected, a collection charge will also apply. Heaters built to customer specification will not be eligible for return; any cancellation prior to despatch will be subject to a charge relevant to costs incurred.

#### Excess Items

Nortek Global HVAC UK Ltd systems are designed using the information available to us at the time. Due to the high cost of handling and risk of damage, it is not possible for excess Nor-Ray-Vac, herringbone materials or warm air flue to be returned for credit.

#### Delivery Dates

All dates quoted for delivery are approximate only and Nortek Global HVAC UK Ltd shall not be liable for the delay in delivery of goods however caused. You are advised to ensure that goods have been delivered to the required location before committing labour.

#### Radiant heater stillage

For large radiant heater orders, components are delivered on stillages, which should be unloaded upon receipt and returned to the delivery vehicle. Failure to do so will result in additional charges to collect and return stillage(s).

What is covered under our standard warranty:

All heaters, controls and accessories supplied as part of a new heating system

WARRANTY	
Labour	1st Year
Parts - Excludes consumables (i.e belts, filters, fuses, Quartzglow bulbs etc) - 5	1st & 2nd Year
Access equipment and tool hire	1st Year
Carriage cost for replacements	1st Year

Exceptions for new installations

DESCRIPTION	
DS destratification fans	1st Year (parts only)

Spare parts

WARRANTY	
Controls and accessories supplied as spares (excl consumables)	1st Year
General spare parts (excl consumables)	1st and 2nd Year
Carriage cost for replacement spares	1st Year
Labour for replacement spares	1st Year

## Standard warranty period

Date of start:	From date of despatch or commissioning date (if no more than 90 days from date of despatch and conducted by a Nortek Global HVAC UK Service Engineer) Commissioning report and documentation will be required.
Who is covered?	The purchasing customer account holds the warranty.
Who holds the warranty?:	Payment has to either have been settled or still be within the agreed account payment terms e.g. an account with a 30 day payment term.
Payment of items in warranty:	Proof of commissioning and annual service reports must be supplied by the customer.
Commissioning and service of units:	Unauthorised modifications to equipment
Not covered:	

## Payments

Warranty parts only request:	Customers requesting parts only will be invoiced for the items and carriage. Upon return and our receipt of the faulty items and our agreement as to the warranty, a credit for the value of the invoice will be made.
Under warranty engineer site visits:	We will send a 'Service and Breakdown Agreement' form, this should be completed and returned with an order for site attendance. Customers will only be charged if the call out is not covered by warranty and after full negotiation between ourselves and the customer.
Cash customers:	Cash customers should pay pro-forma for the day labour rate and any parts that may be required. If the call-out is found to be covered by warranty then a credit for all items covered by the warranty will be issued.

## Standard call-out policy

Engineer call-outs:	We aim to attend site within a maximum 3 working days upon receipt of full instructions and paperwork. We will however do all we can to meet any specific customer requirements.
---------------------	--





EFFECTIVE UNTIL 2022 | ALL PRICES ARE EX WORKS | E&OE

Nortek Global HVAC UK Limited  
Fens Pool Avenue | Brierley Hill | West Midlands | DY5 1QA | UK  
T: 01384 489 700 | F: 01384 489 707  
reznorsales@nortek.com | reznor.eu

Registered in England No. 01390934 | Registered Office: Nortek Global HVAC UK Limited, Fens Pool Avenue, Brierley Hill, West Midlands, DY5 1QA  
Nortek Global HVAC is a registered trademark of Nortek Global HVAC Limited. Because of continuous product innovation,  
Nortek Global HVAC reserves the right to change product specification without due notice.

**REZNOR®**  
 **NORTEK**  
GLOBAL HVAC